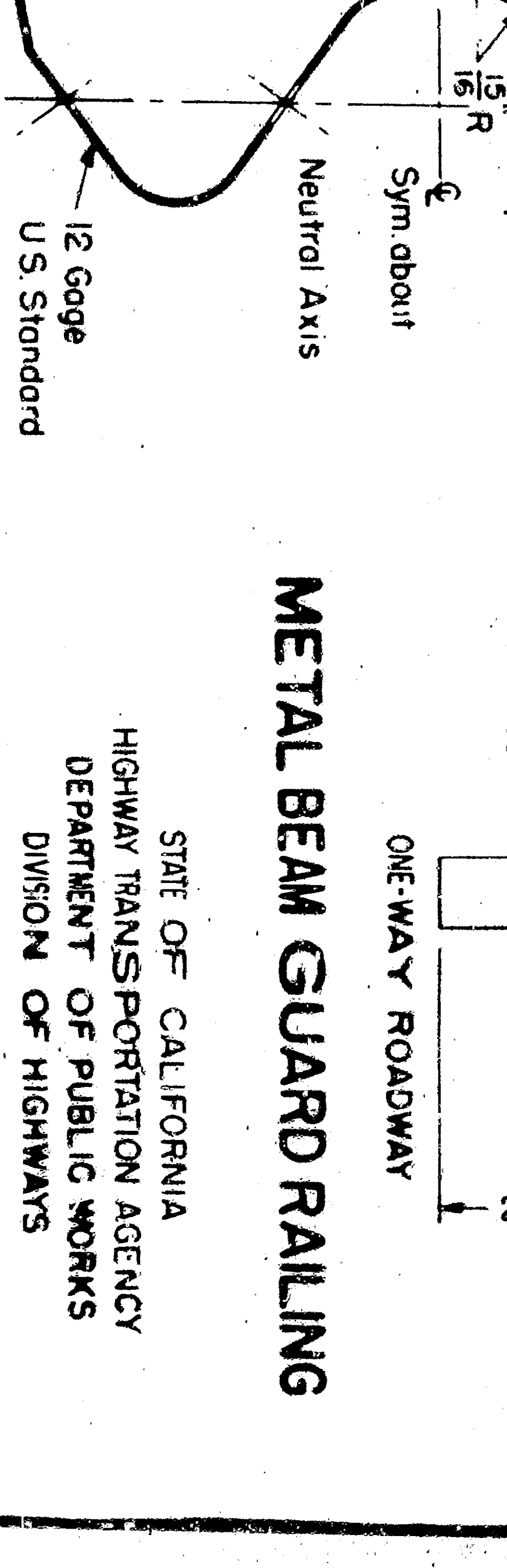
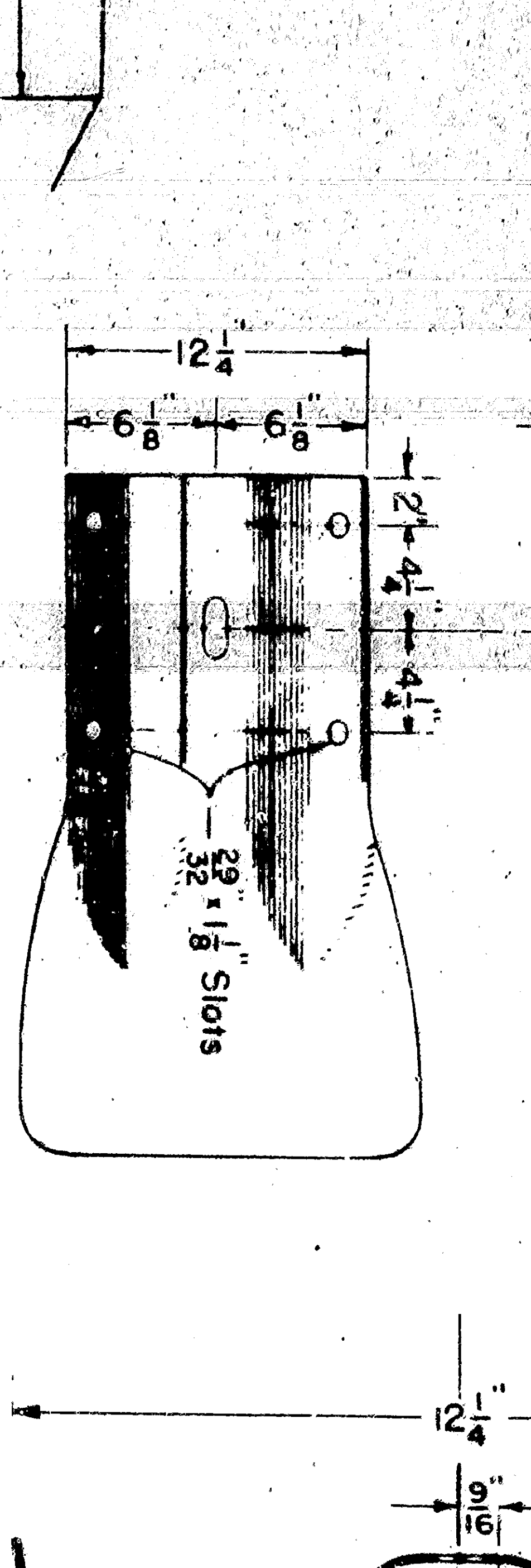
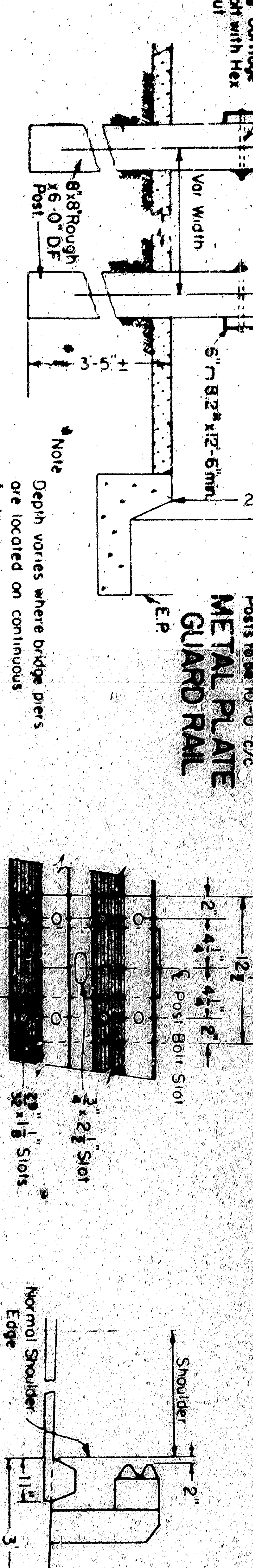
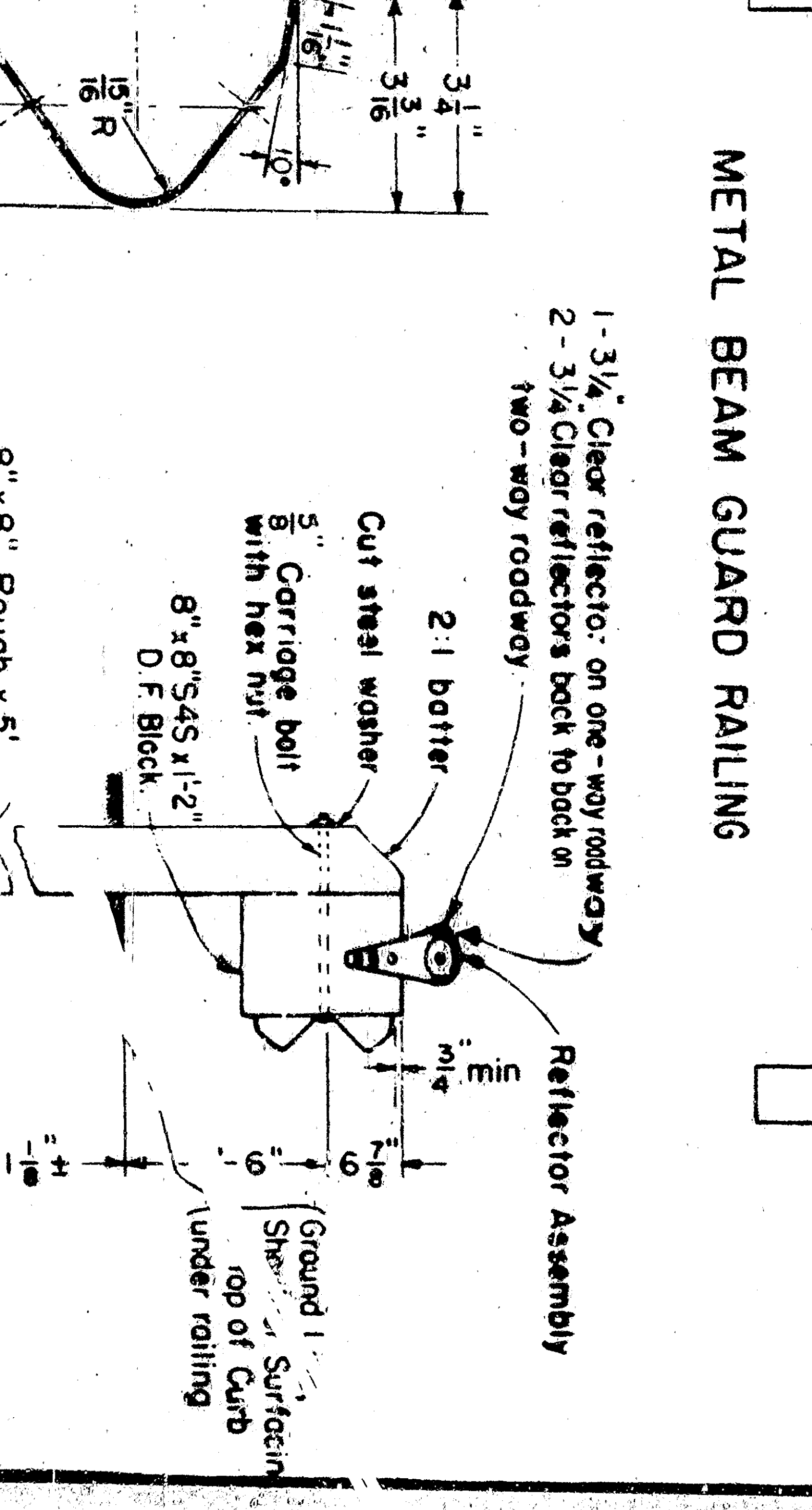
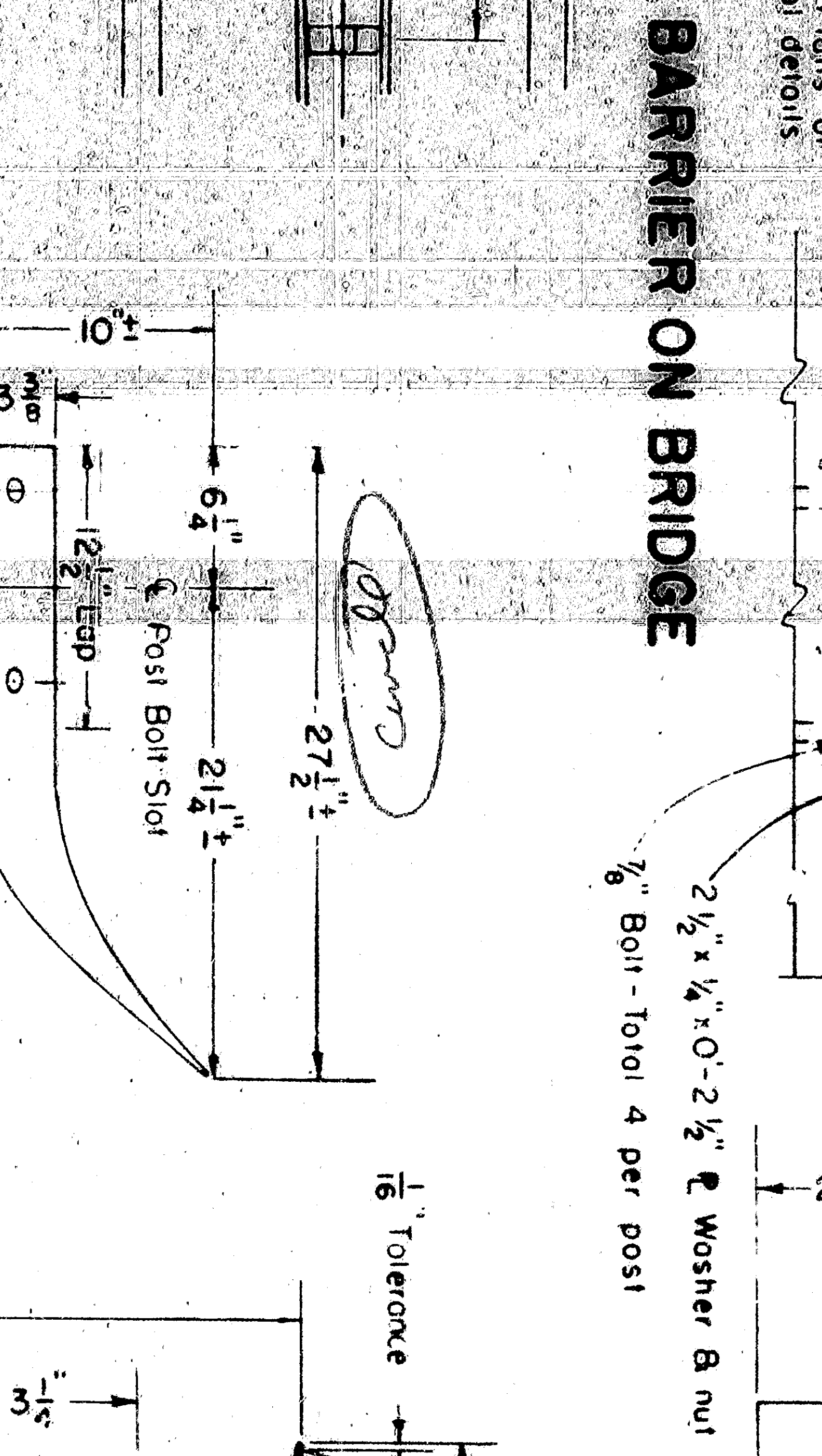
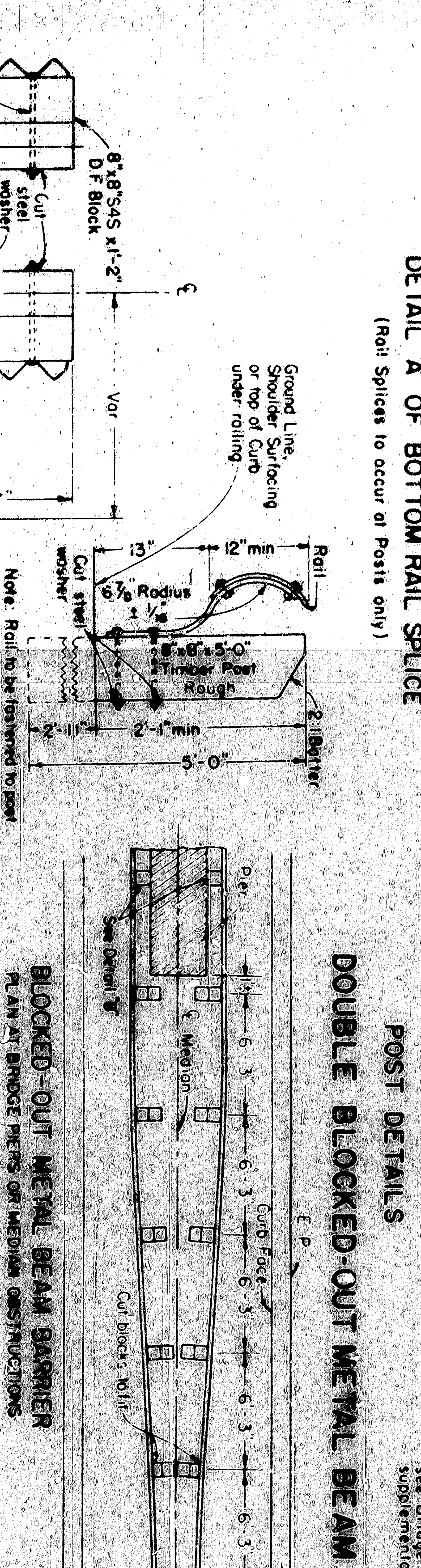
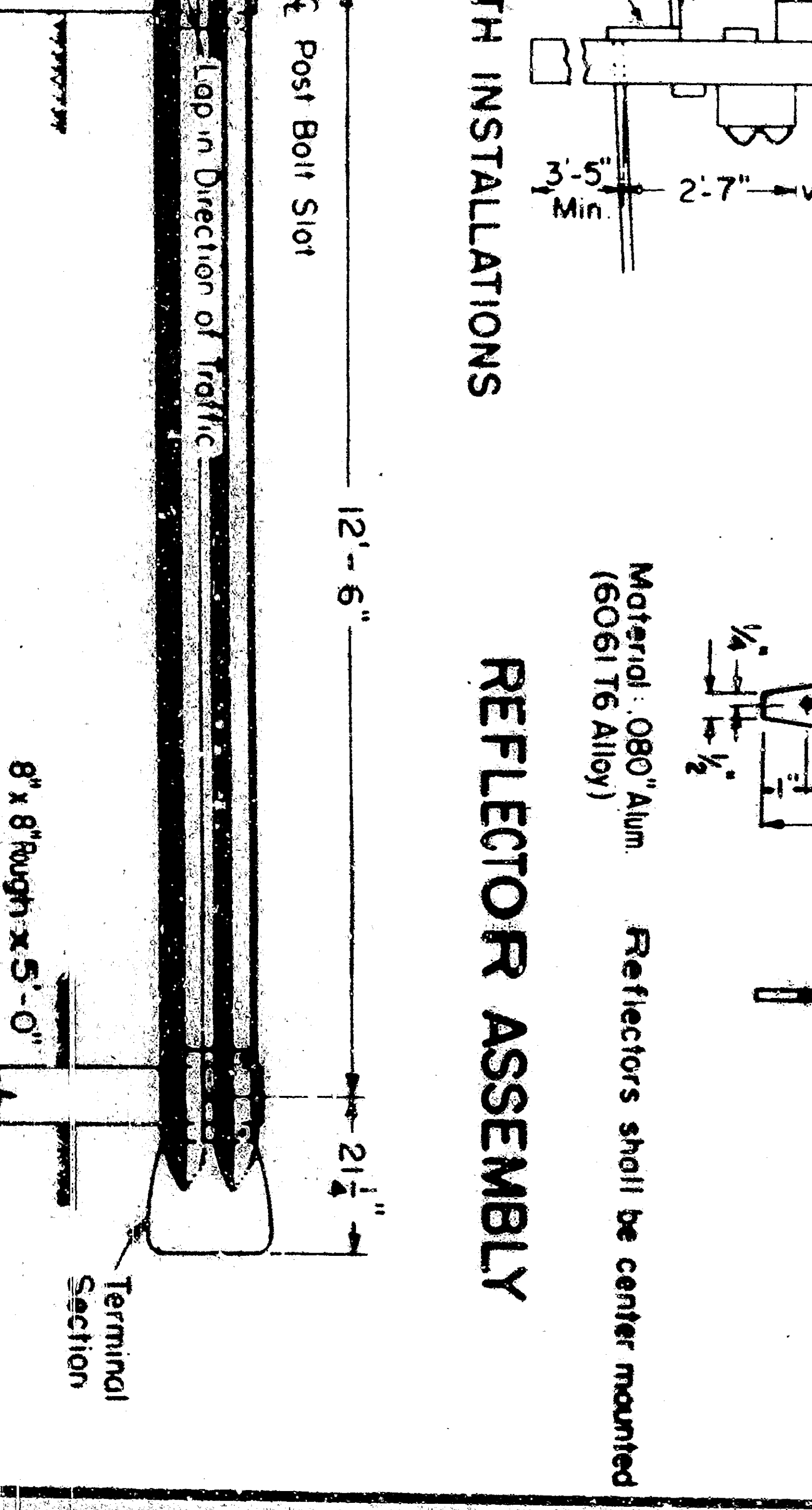
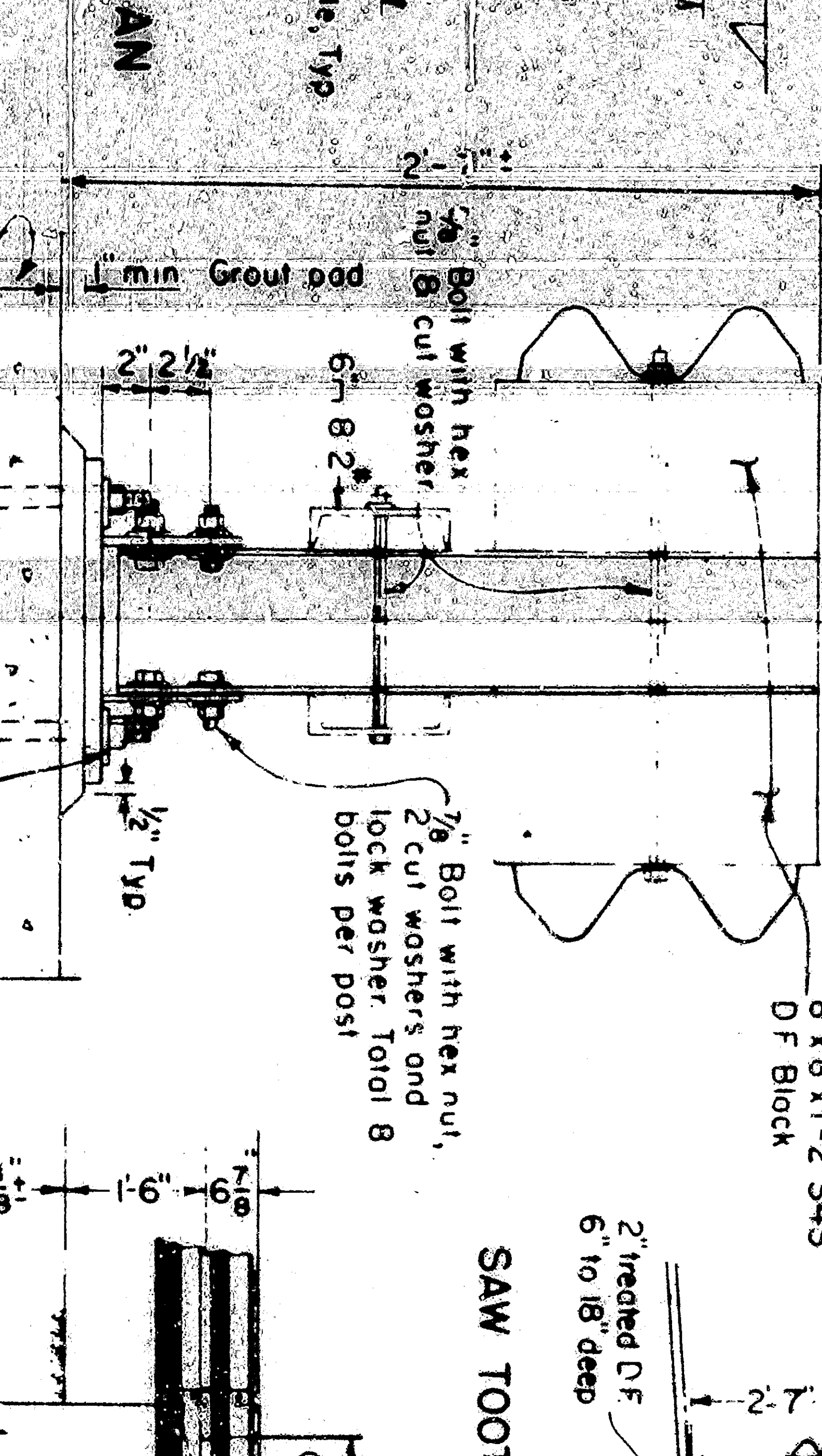
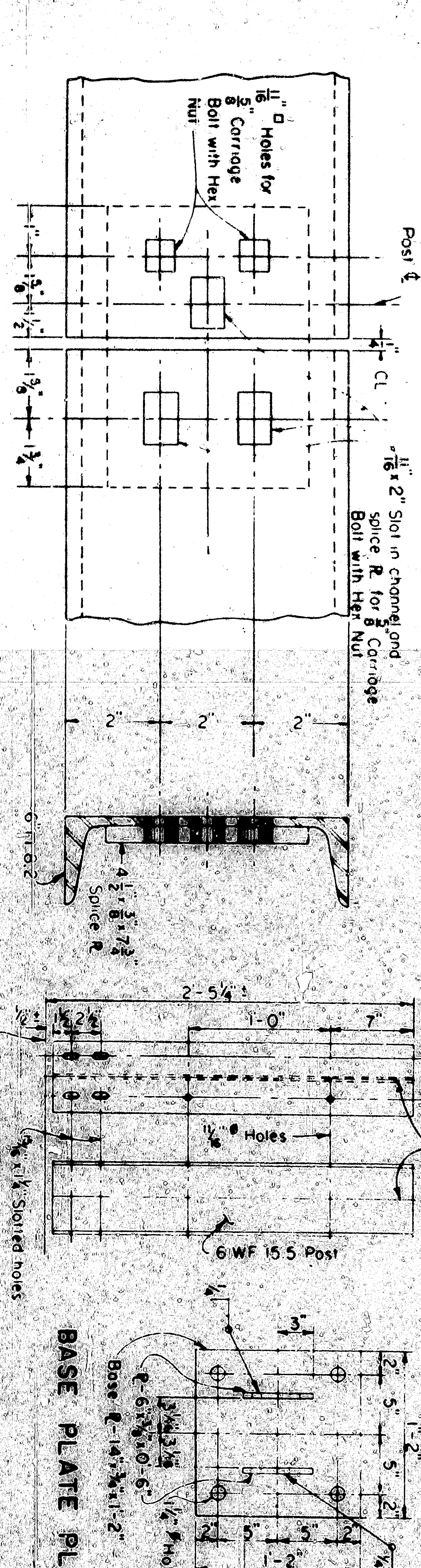
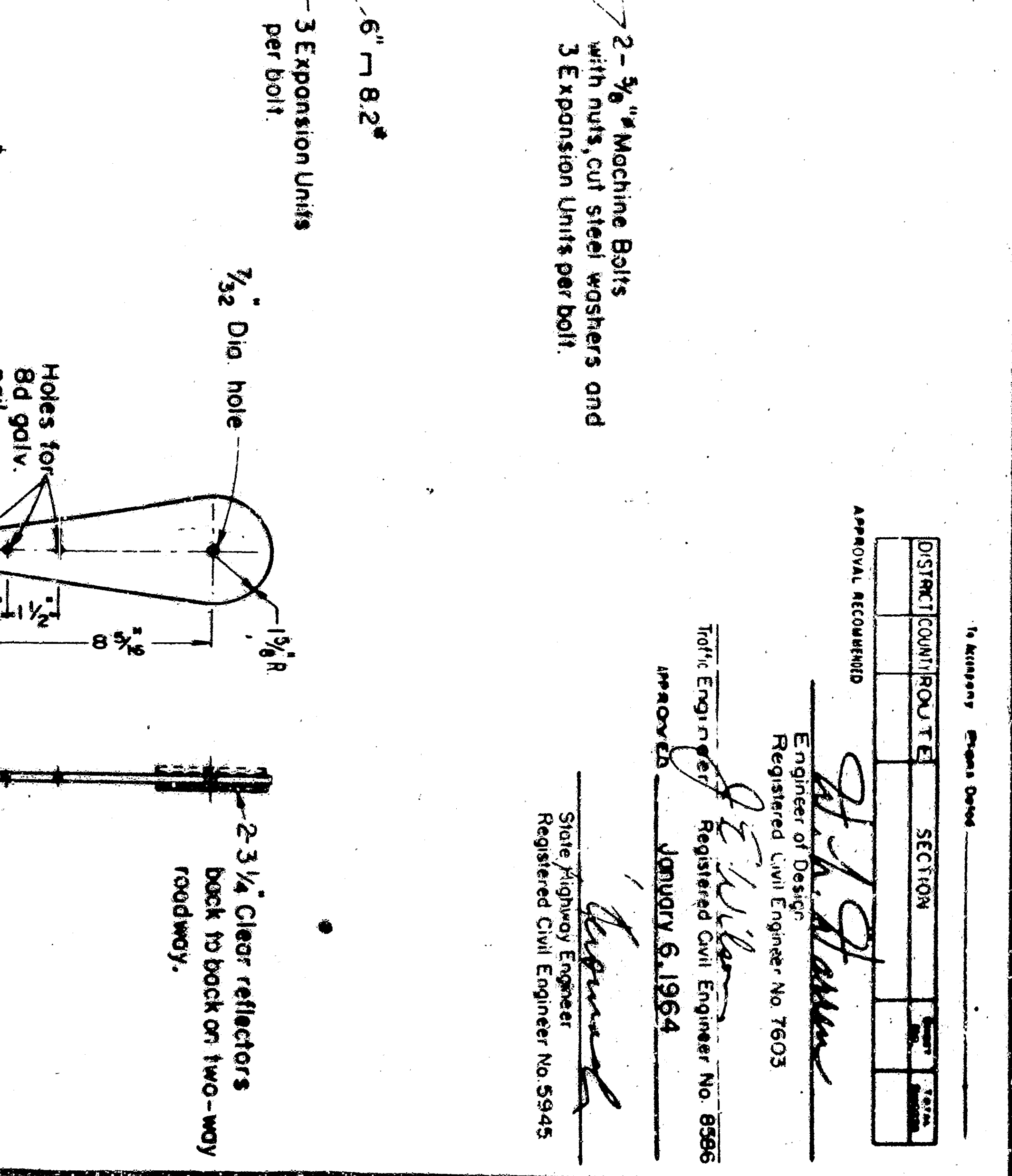
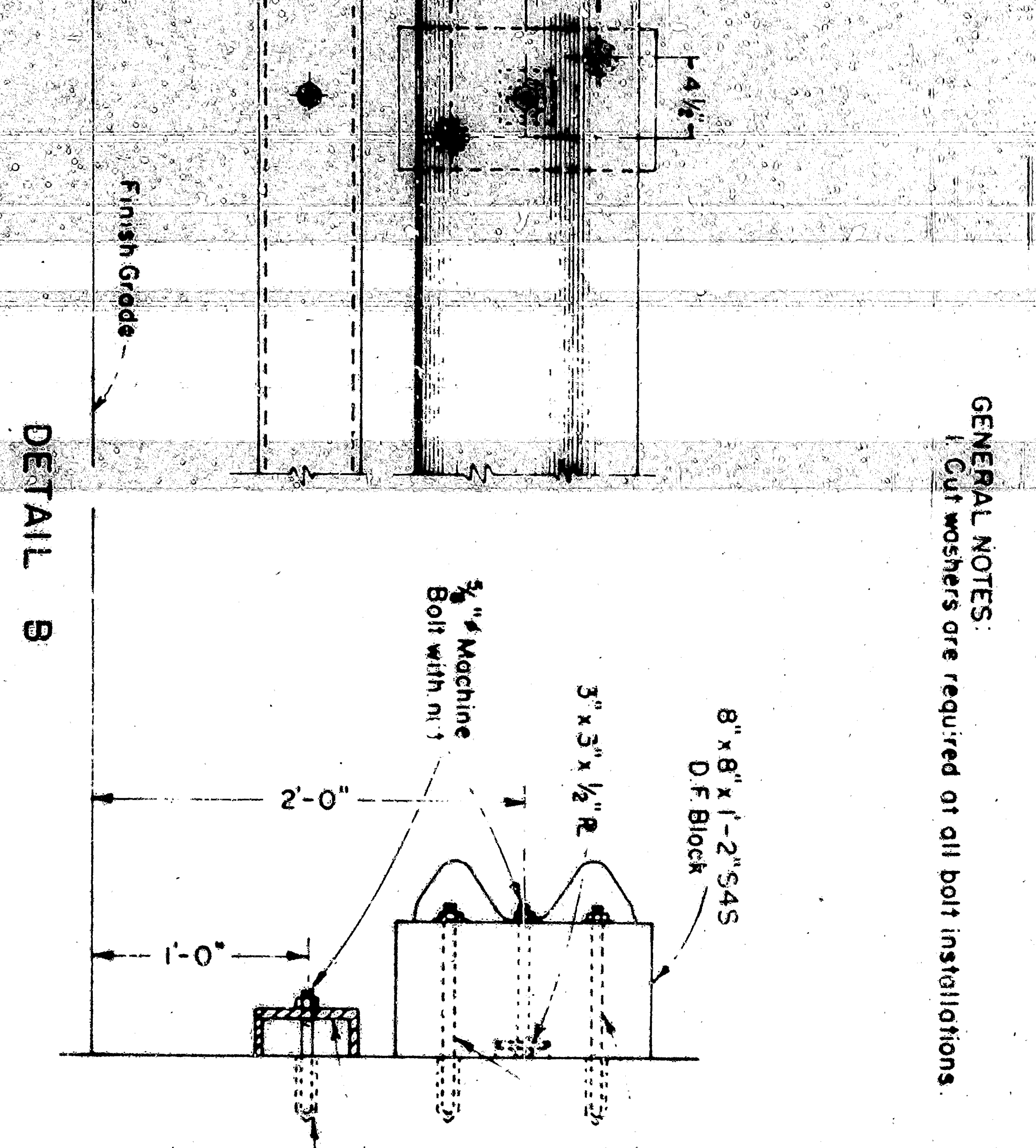
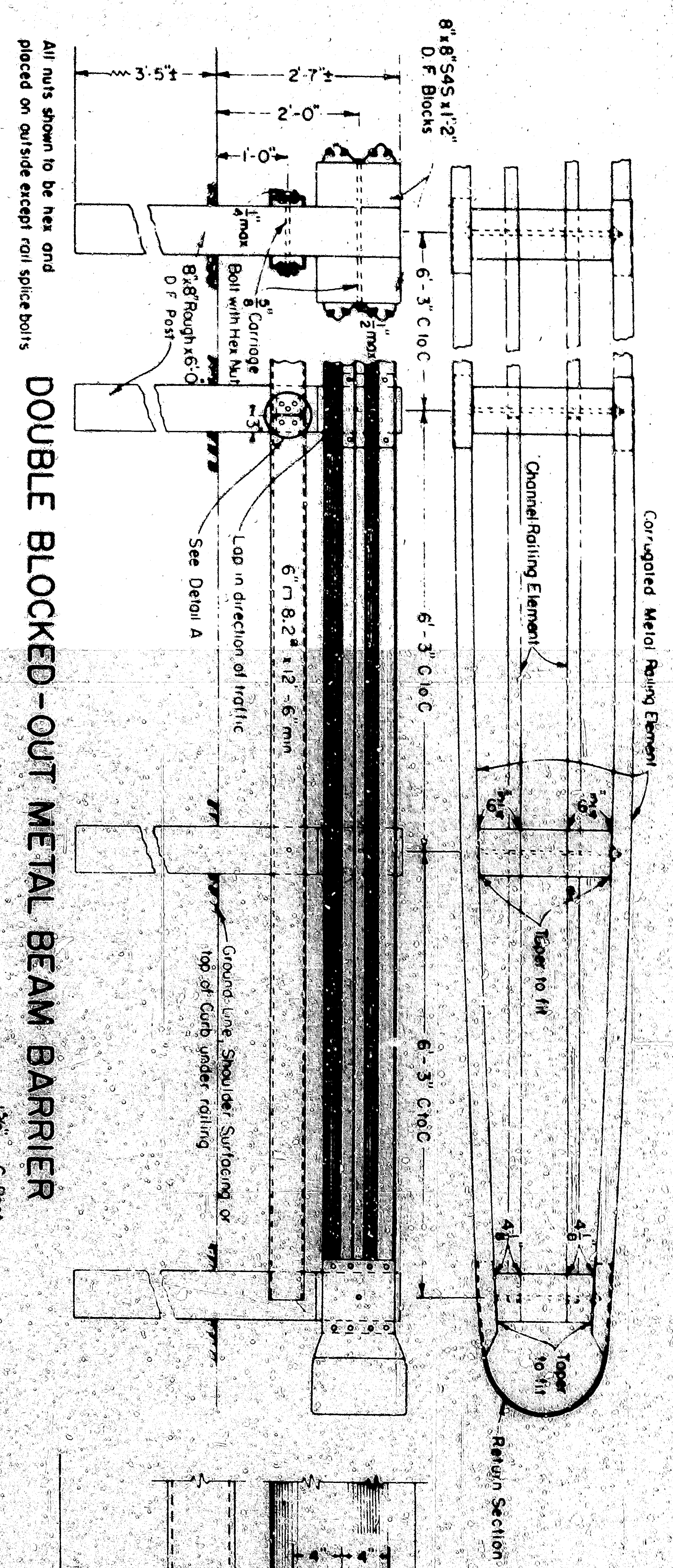


DATE	BY	REVISION
12/11/54	CLP	

SECTION	DATE
SECTION	12/11/54

APPROVED: *[Signature]*
 REGISTERED CIVIL ENGINEER NO. 6556
 JANUARY 5, 1954

APPROVED: *[Signature]*
 REGISTERED CIVIL ENGINEER NO. 5945



GENERAL NOTES:
 1. Cut washers are required on all bolt installations.
 2. 3/4 inch clear reflectors on one-way roadway.
 3. 3/4 inch clear reflectors back to back on two-way roadway.
 4. Depth varies where bridge piers are located on continuous footings.
 5. 3/4 inch diameter hole over shoulder bolts with hex nuts. Total 8 per splice and 4 per terminal section.
 6. For details see Standard Plan A73.

STATE OF CALIFORNIA
 HIGHWAY TRANSPORTATION AGENCY
 DEPARTMENT OF PUBLIC WORKS
 DIVISION OF HIGHWAYS
 DRAWING NO. 5189 SHEET 7 OF 7

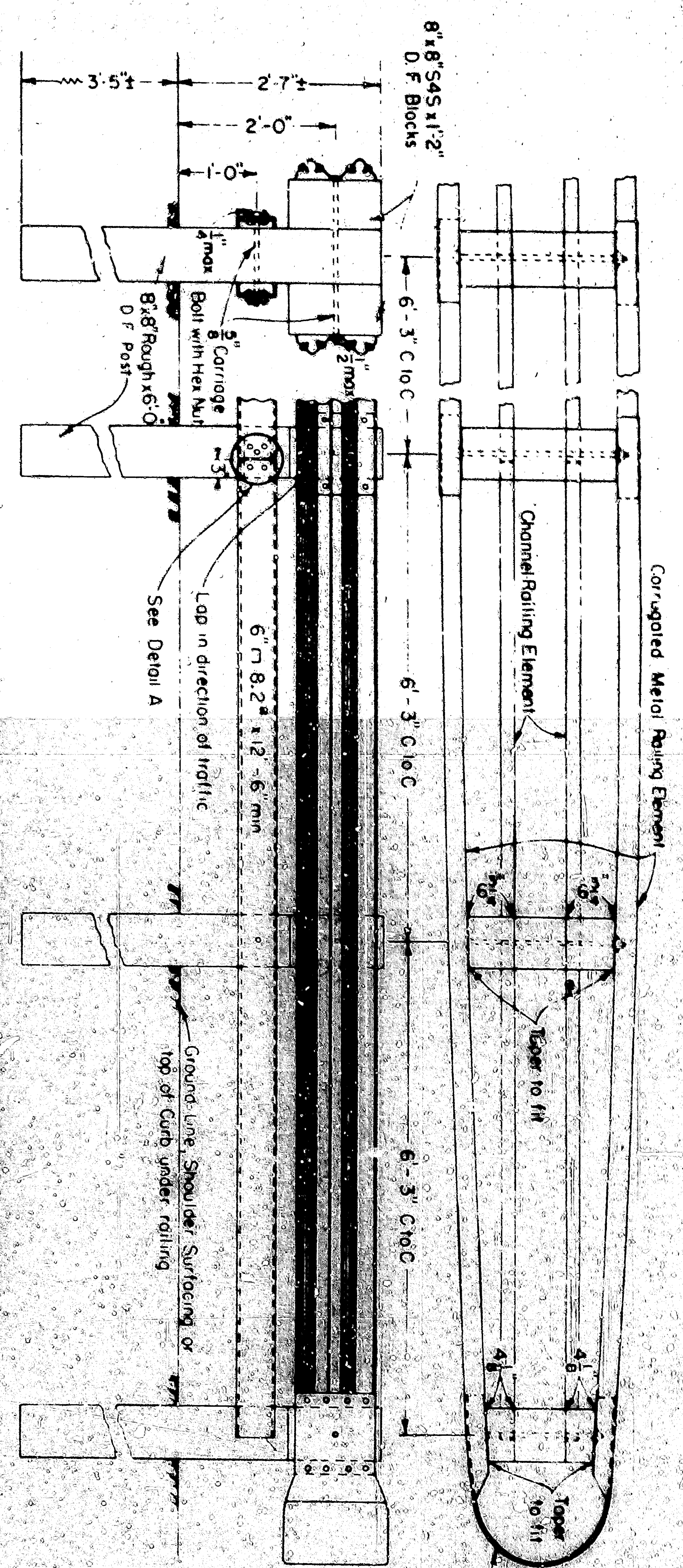
DATE	1964	REVISION	NO.	1
BY	CLP	APPROVED	DATE	1964

1. Assembly - Roadway
 SECTION
 MATERIAL RECORD

Engineer of Design
 Registered Civil Engineer No. 7603
 J. J. [Signature]
 JUNE 15, 1964
 JOURNAL 5, 1964

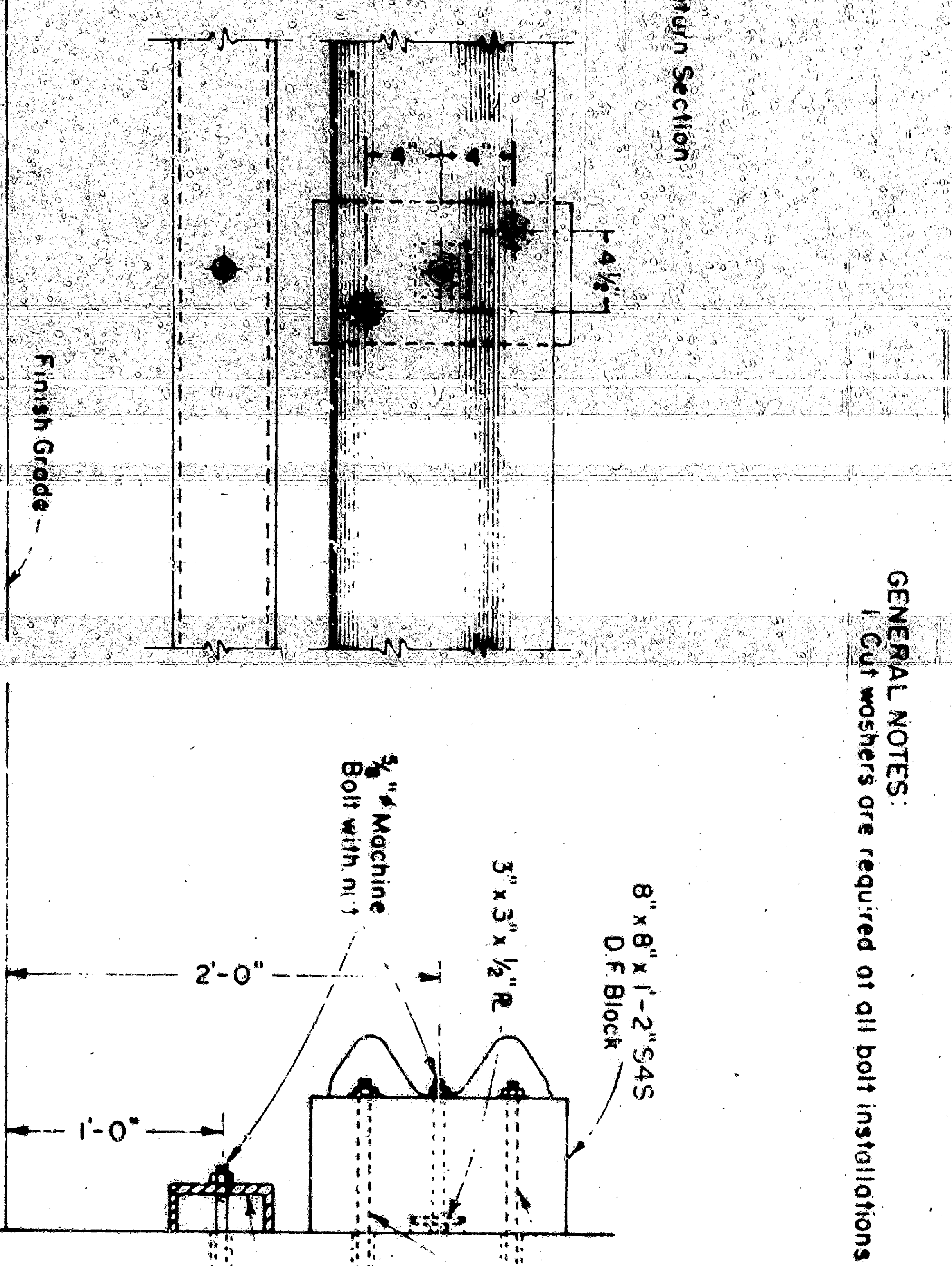
Soil Engineer
 Registered Civil Engineer No. 5945
 [Signature]
 REGISTERED CIVIL ENGINEER

GENERAL NOTES:
 1. Cut washers are required on all bolt installations.



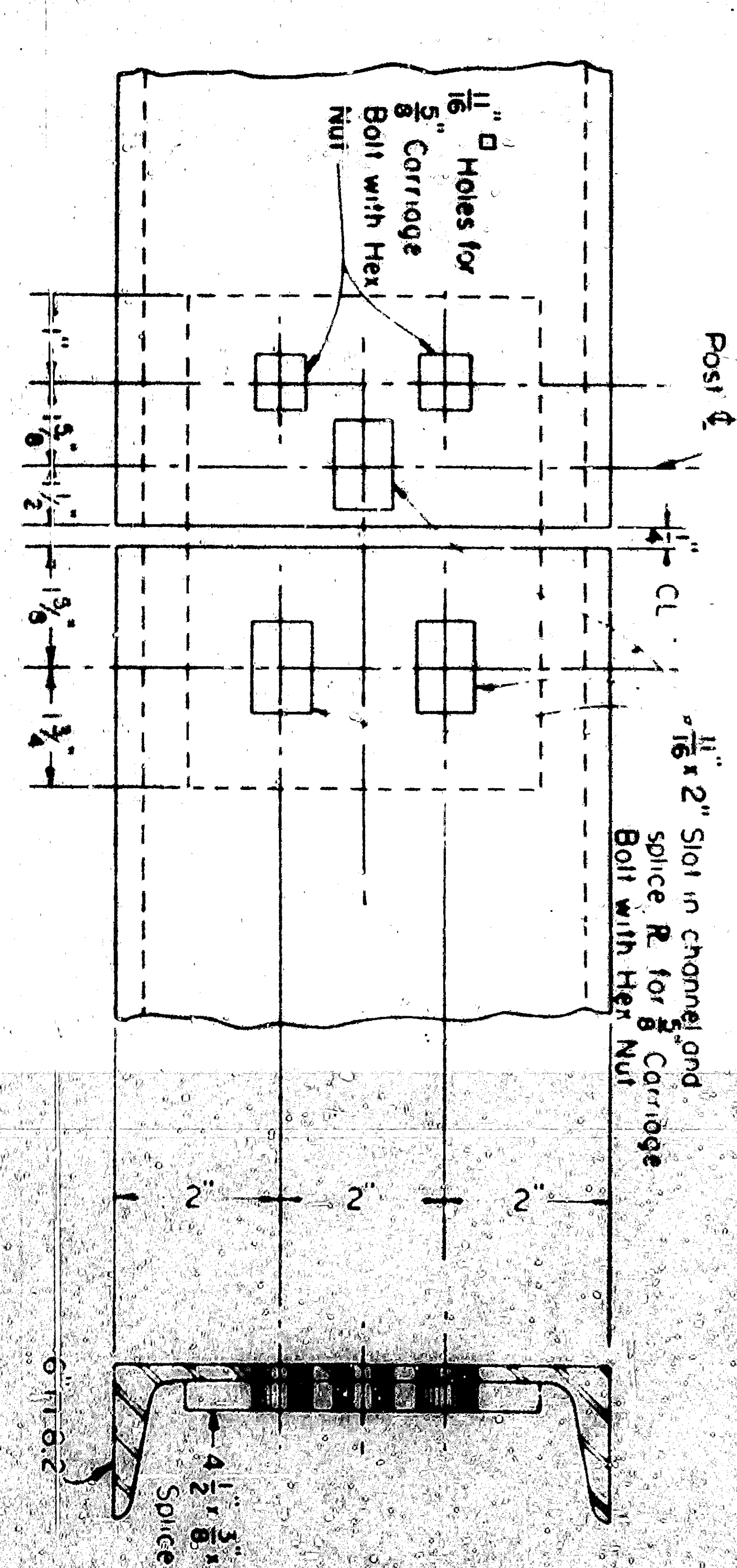
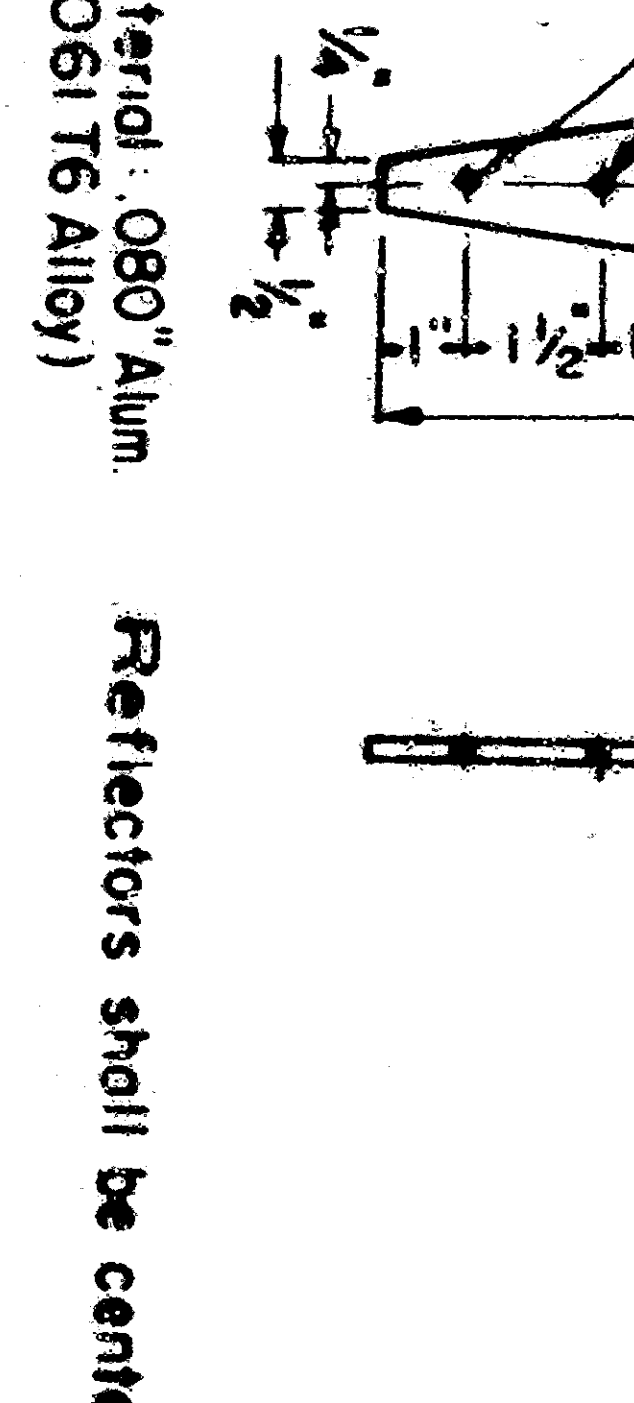
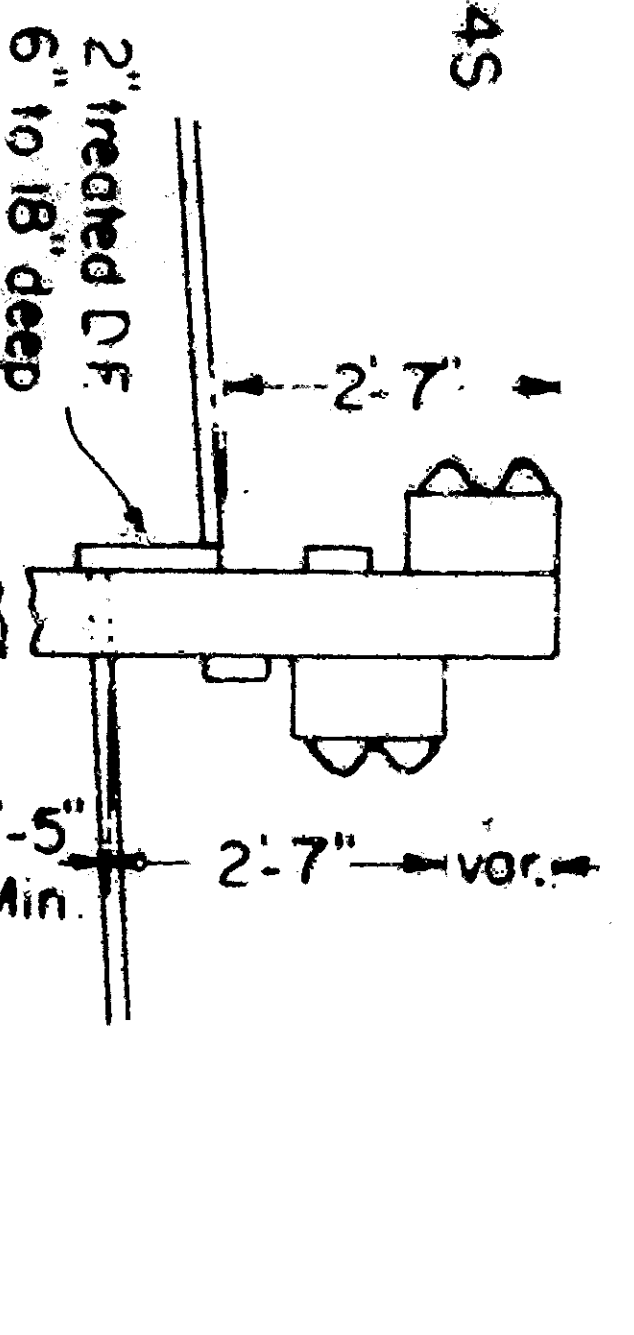
DOUBLE BLOCKED-OUT METAL BEAM BARRIER

DETAIL B

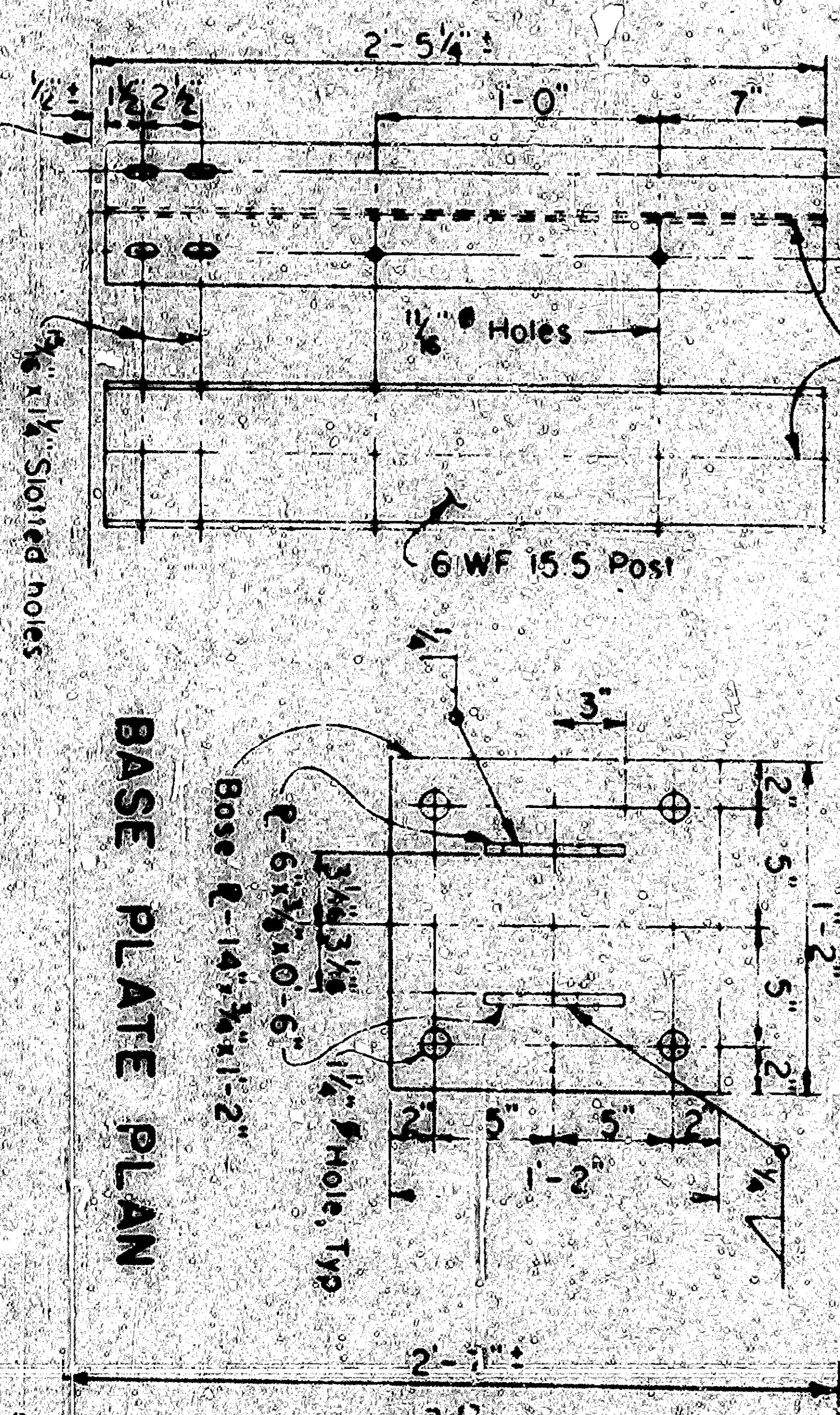


SAW TOOTH INSTALLATIONS

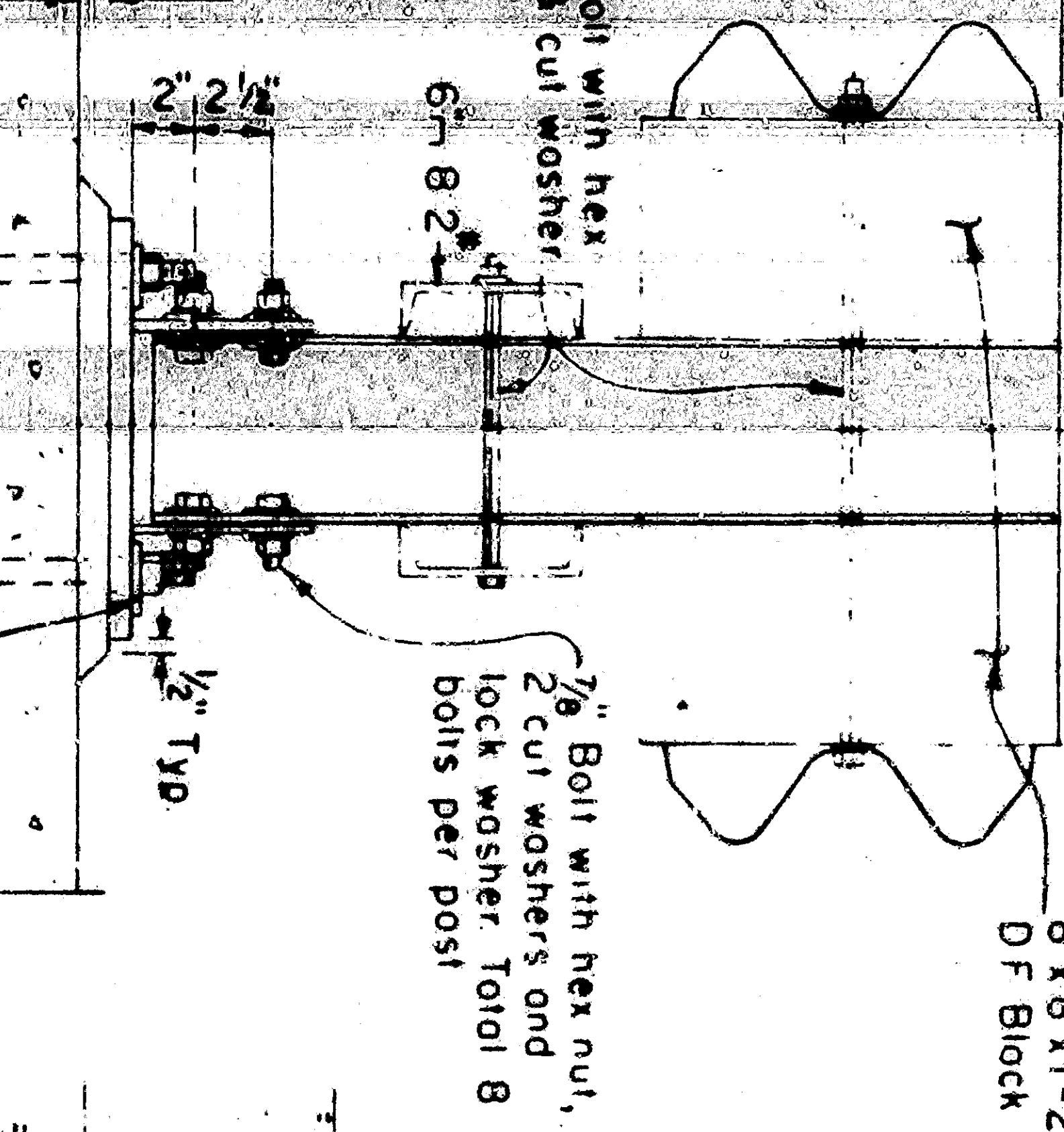
REFLECTOR ASSEMBLY



DETAIL 'A' OF BOTTOM RAIL SPLICE
 (Rail Splices to occur at Posts only)



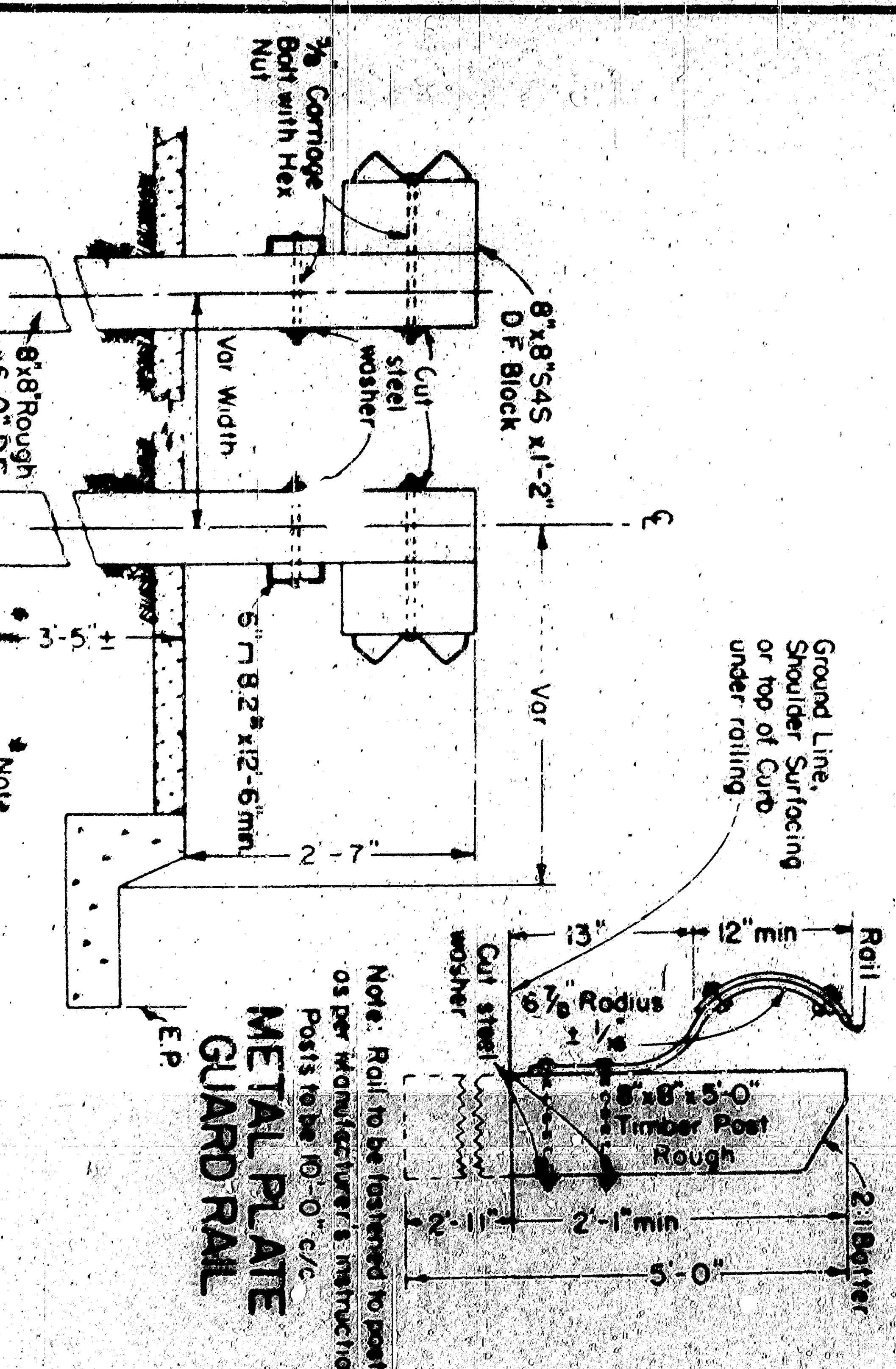
POST DETAILS



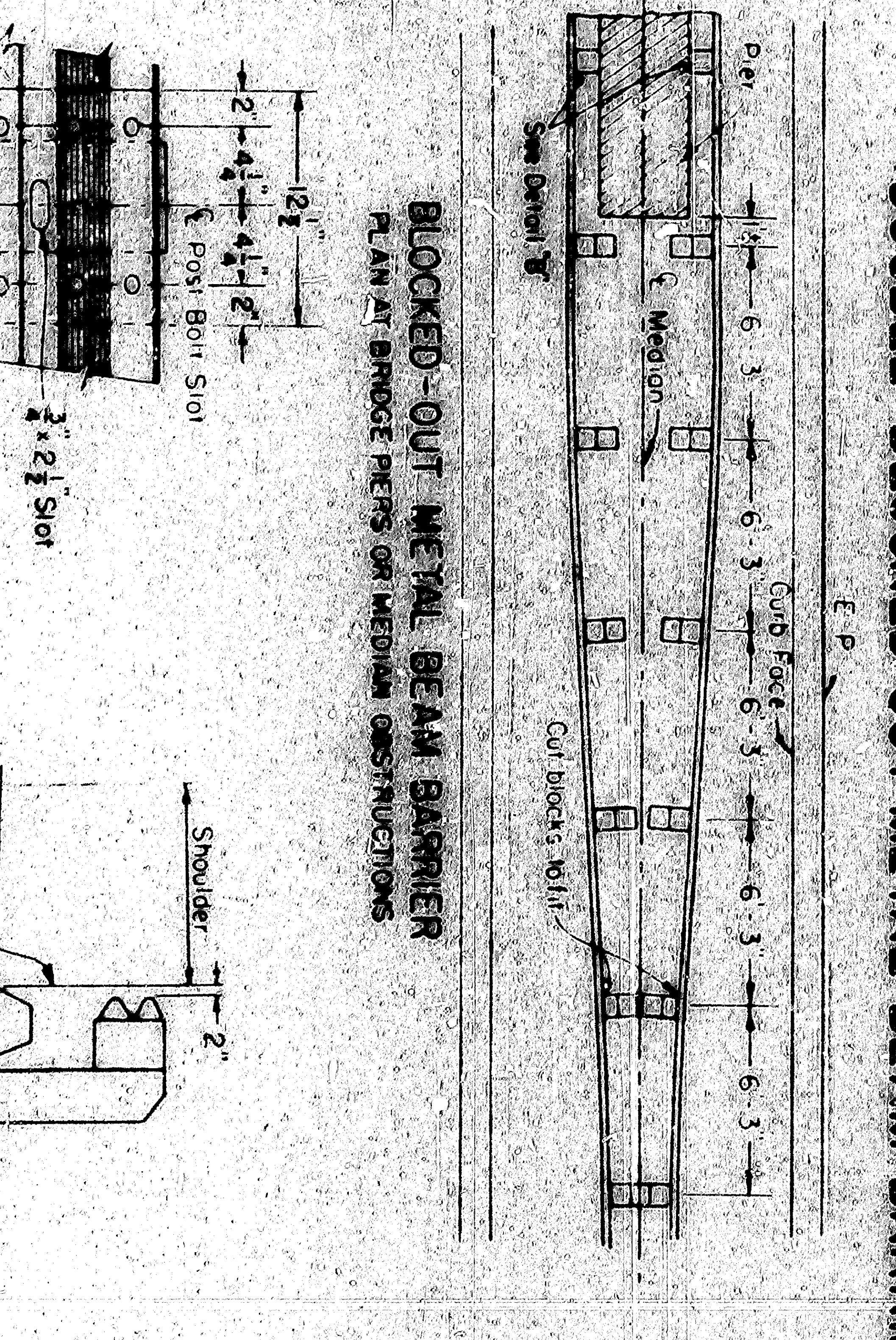
BASE PLATE PLAN

DOUBLE BLOCKED-OUT METAL BEAM BARRIER ON BRIDGE

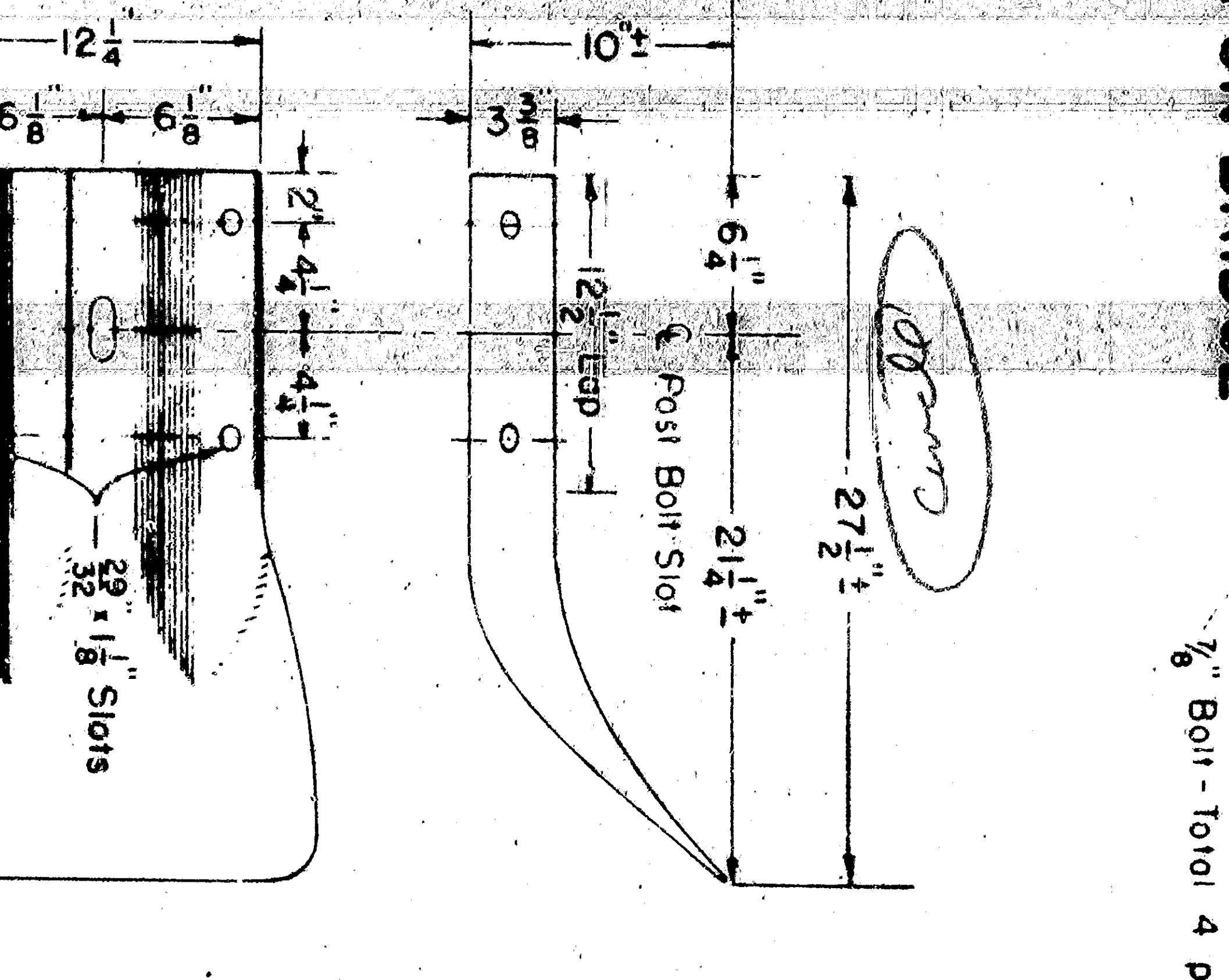
METAL BEAM GUARD RAILING



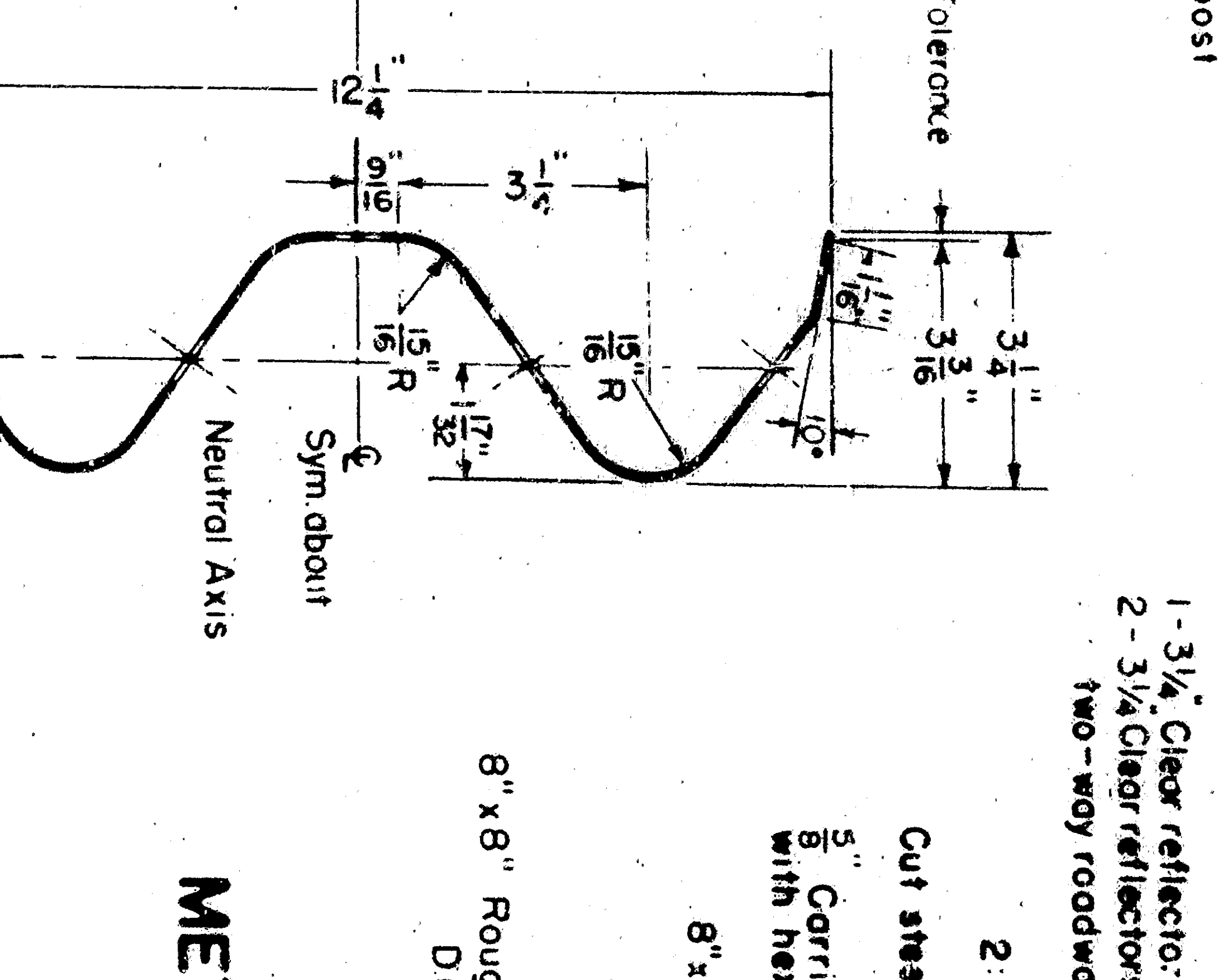
SINGLE BLOCKED-OUT METAL BEAM BARRIER



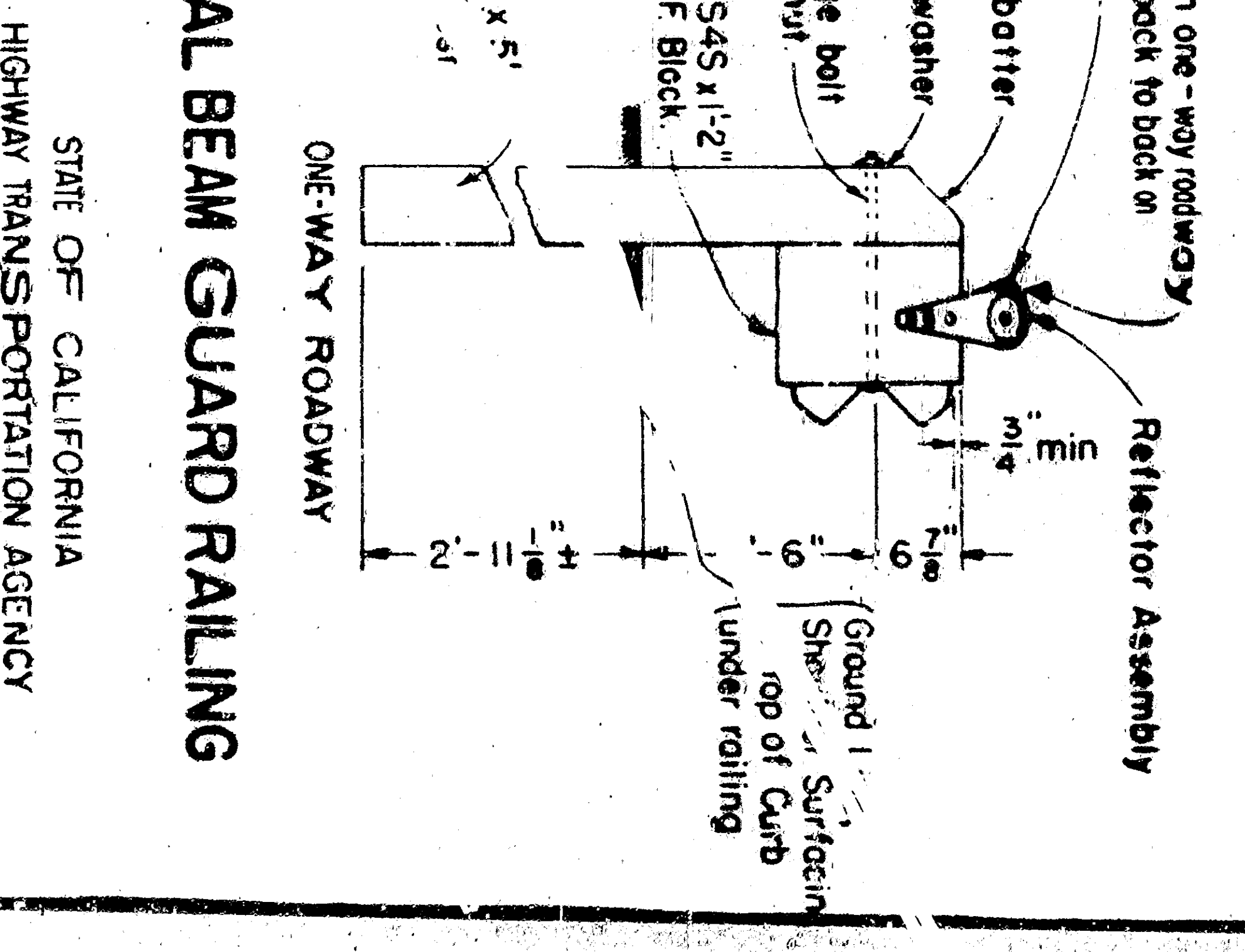
BLOCKED-OUT METAL BEAM BARRIER
 PLAN AT BRIDGE PIER OR MEDIAN OBSTRUCTIONS



RAIL SPLICE



SECTION THRU RAIL ELEMENT



METAL BEAM GUARD RAILING

GUARD RAILING & BARRIER RAILING AT 77-10

STATE OF CALIFORNIA
 HIGHWAY TRANSPORTATION AGENCY
 DEPARTMENT OF PUBLIC WORKS
 DIVISION OF HIGHWAYS